

SMFC DISTRICT RANKING MARCH 2023



EXCITING CALIFORNIA DASHBOARD, NICHE.COM, AND GREATSCHOOLS.COM RATINGS



As I've said before, "We believe in transparency and accountability. Our district expects to have increased student achievement every year, and our districtwide communication creates a permanent record of the district's on-going progress."

I am proud to announce that our district was recently awarded an "A" districtwide rating by niche.com. In our county, this rating was achieved by our district and a select few. Our school test scores also recently received very high rankings on the greatschools.com website.

According to Niche, their site, "has nearly 2.5 million school reviews from real students, parents, and teachers—more school reviews than any other place on the internet. This gives an unparalleled, honest view into what people really think about a school." The Great Schools assigns number-based ratings and comparison tools based on student test scores for public schools.

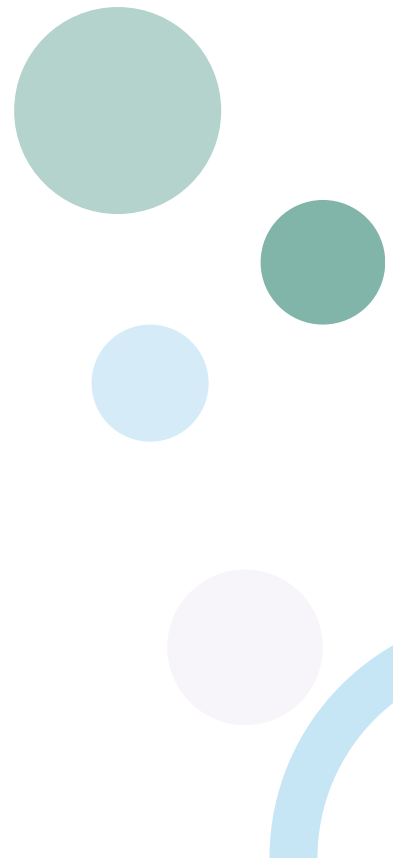
Since 2022, our district has published the L3 Report using 2022 state test score results and 2021-22 internal test scores. We included charts for grade-level reading starting in kindergarten, as well as attendance and discipline data. Our intent has been to show the relationships between internal data and state test score data. We conducted a Root Cause Analysis to identify our path forward in terms of solving our challenges. We took on the responsibility to tell our story and connect that story to our Strategic Plan. Our ultimate goal is to implement the highest-quality educational approaches and programs to elevate learning and eliminate the achievement gap.

We are absolutely thrilled that the 2023 Niche.com rankings and greatschools.com test score ratings confirm the California Dashboard ratings. I am deeply grateful to the outstanding teachers, staff, and leaders who engage in this important work every day! These outcomes are truly a reflection of their excellence.

Diego R. Ochoa
Superintendent

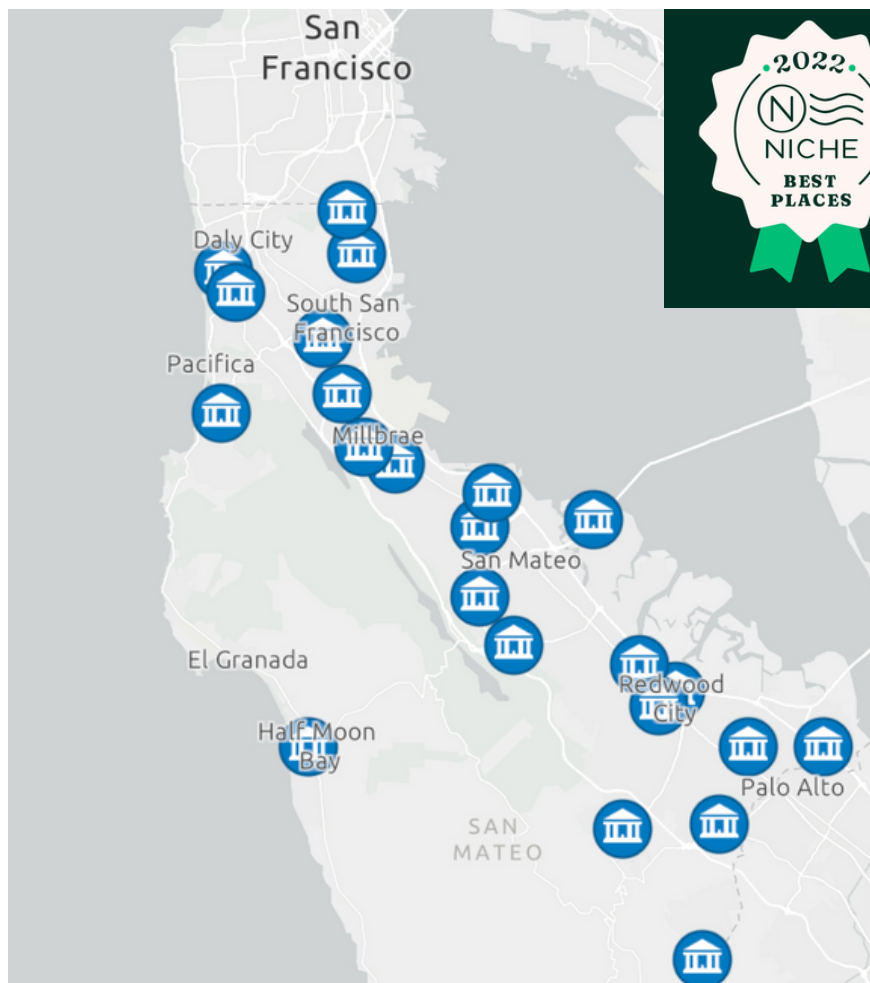
TABLE OF CONTENTS

Niche Rankings	4
GreatSchools Test Score Rankings	6
California School Dashboard	8
CA Dashboard Tool Kit	13



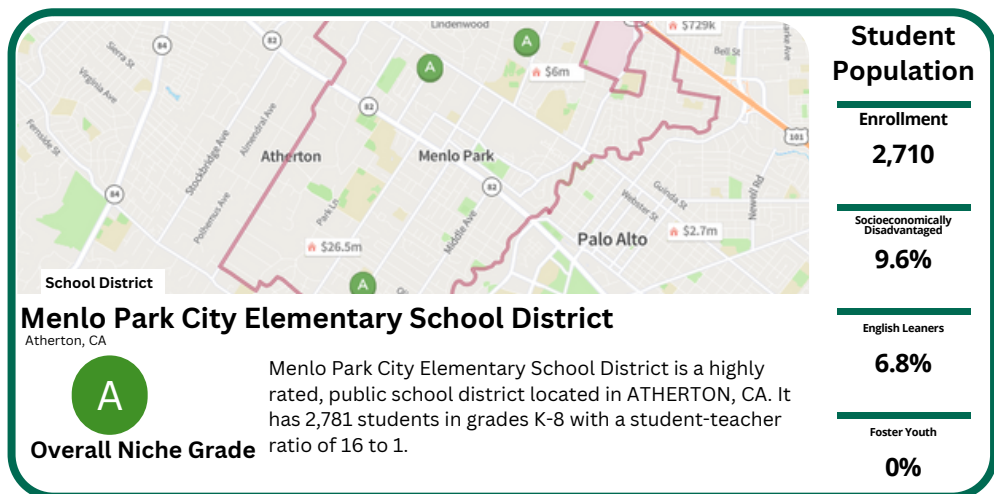
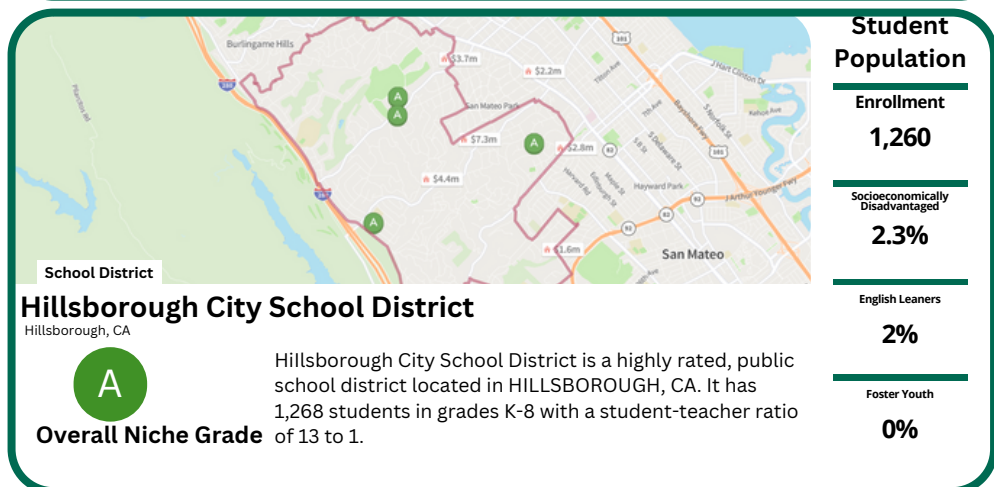
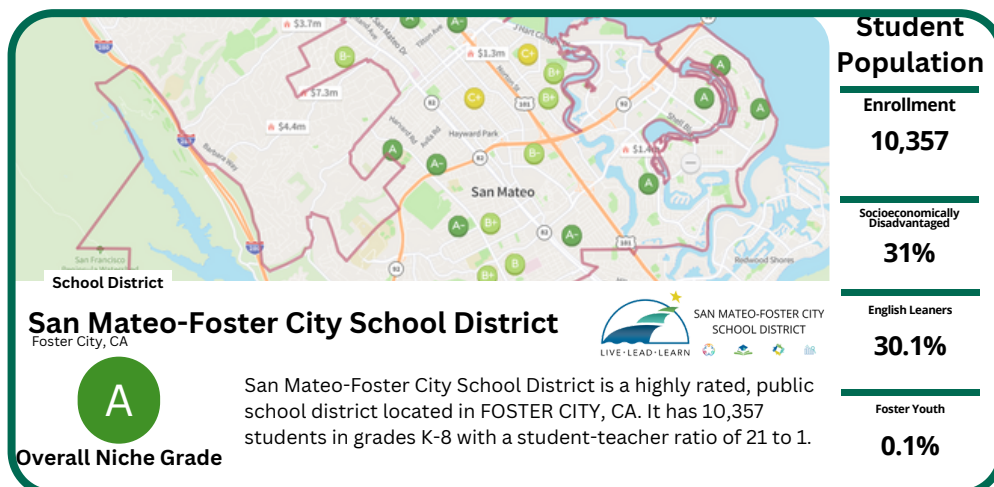


NICHE GRADES AND RANKINGS ARE CALCULATED USING DOZENS OF PUBLIC DATA SETS AND MILLIONS OF REVIEWS. OUR DATA SCIENTISTS AND USER RESEARCHERS RIGOROUSLY ANALYZE DATA AND USER OPINIONS TO ASSESS THE KEY ASPECTS OF K-12 SCHOOLS, COLLEGES, AND PLACES TO LIVE.



NICHE RANKINGS

The San Mateo-Foster City School District has been awarded an "A" districtwide grade for 2023, joining Hillsborough and Menlo Park as highly rated districts. As the largest district in San Mateo County district, serving more than 3,000 English learners, we are proud to earn such a high rating and challenge perceptions of underserved students. Niche grades and rankings are calculated using dozens of public data sets and millions of reviews. Niche rigorously analyzes data and user opinions to assess the key aspects of K-12 Schools, Colleges, and Places to Live. Every month, millions of students and families use the Niche grades and report cards to find the right school or neighborhood.



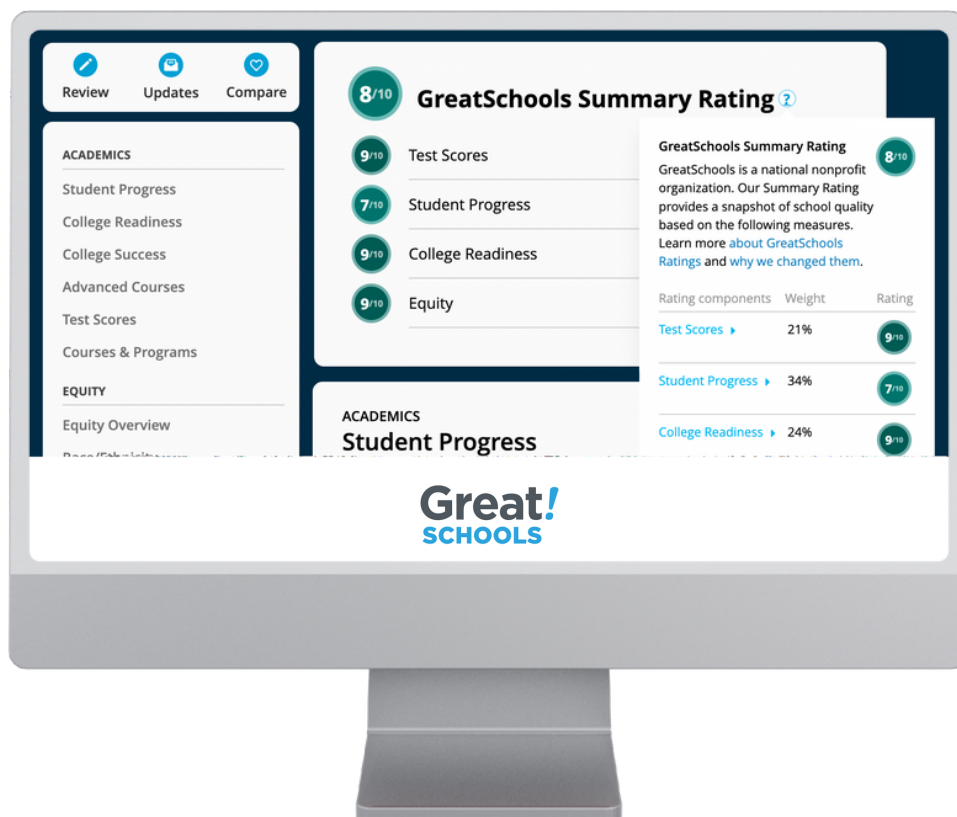


Great Schools is an independent nonprofit with a mission to help all parents get a great education for their children and for communities to ensure that all students get the support they need to succeed. The definition of “success” is as diverse as the millions of parents who visit GreatSchools' site each year, and strive to display a variety of indicators of school quality to provide a well-rounded picture of how effectively each school serves its students.

The GreatSchools Summary Rating appears at the top of a school's profile. Our ratings follow a 1-10 scale, where 10 is the highest and 1 is the lowest. Ratings at the lower end of the scale (1-4) signal that the school is “below average,” 5-6 indicate “average,” and 7-10 are “above average.”

The Test Score Rating is based on student performance data gathered at the state level. Each separate themed rating reflects a different dimension of school quality and provides distinct value to a school's Summary Rating. School Test Score Rating

The school Test Score Rating is calculated by first computing a standardized proficiency rate for each school in a state. To do this, we compute the school's position in each grade/subject distribution as a percentile. Each percentile is calculated by comparing a school's score for each grade/subject (eg. 4th grade Math, 10th grade Science) to the distribution of scores from all other schools in the state on that same grade/subject test. For example, an elementary school's rating might be an average of six percentiles (student assessment scores from 3rd, 4th, and 5th grades, in both English and Math). The school's 3rd grade English percentile would be determined by comparing the school's score to all other 3rd grade English scores in the state and finding the percentile value.



GREAT SCHOOLS TEST SCORE RANKINGS

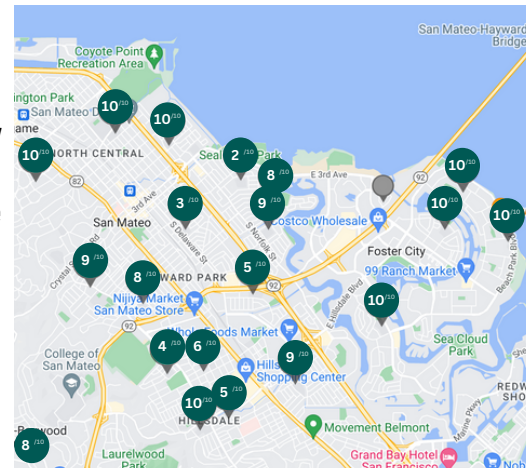
The Test Score Rating measures schools on academic proficiency, using performance on state tests (the percentage of students scoring at or above proficiency) across grades and subjects, compared to other schools in the state, to produce a 1-10 rating for each school. Our school district is unique in that we serve more than 30% of English learners and 31% socio-economically disadvantaged students yet, we produce very high school text score ratings. . We are also the largest school district in San Mateo County, we serve 21 diverse schools, we implement distictwide equity strategies, and our results are impressive.

**Student
Population**

**Enrollment
10,357**

**Socioeconomically
Disadvantaged
31%**

**English Learners
30.1%**



This map shows the affiliated "Test Score" rating for each SMFCS school in 2023.

Audubon Elementary
Foster City, CA

Test Score Rating

10^{/10}

GreatSchools



George Hall Elementary
San Mateo, CA

Test Score Rating

9^{/10}

GreatSchools



Bayside Academy^(Elementary)
San Mateo, CA

Test Score Rating

8^{/10}

GreatSchools



Highlands Elementary
San Mateo, CA

Test Score Rating

8^{/10}

GreatSchools



Abbott Middle School
San Mateo, CA

Test Score Rating

5^{/10}

GreatSchools



Baywood Elementary
San Mateo, CA

Test Score Rating

9^{/10}

GreatSchools



Laurel Elementary
San Mateo, CA

Test Score Rating

5^{/10}

GreatSchools



Bayside Academy^(Middle)
San Mateo, CA

Test Score Rating

8^{/10}

GreatSchools



Beresford Elementary
San Mateo, CA

Test Score Rating

6^{/10}

GreatSchools



Lead Elementary
San Mateo, CA

Test Score Rating

2^{/10}

GreatSchools



Borel Middle School
San Mateo, CA

Test Score Rating

8^{/10}

GreatSchools



Brewer Island Elementary
Foster City, CA

Test Score Rating

10^{/10}

GreatSchools



Meadow Heights Elementary
San Mateo, CA

Test Score Rating

4^{/10}

GreatSchools



Bowditch Middle School
Foster City, CA

Test Score Rating

10^{/10}

GreatSchools



College Park Elementary
San Mateo, CA

Test Score Rating

10^{/10}

GreatSchools



North Shoreview Montessori^(Elementary)
San Mateo, CA

Test Score Rating

10^{/10}

GreatSchools



North Shoreview Montessori^(Middle)
San Mateo, CA

Test Score Rating

10^{/10}

GreatSchools



Fiesta Gardens International School
San Mateo, CA

Test Score Rating

5^{/10}

GreatSchools



Parkside Montessori^(Elementary)
San Mateo, CA

Test Score Rating

9^{/10}

GreatSchools



Parkside Montessori^(Middle)
San Mateo, CA

Test Score Rating

9^{/10}

GreatSchools



Foster City Elementary
Foster City, CA

Test Score Rating

10^{/10}

GreatSchools



San Mateo Park Elementary
San Mateo, CA

Test Score Rating

2^{/10}

GreatSchools



Sunnybrae Elementary
San Mateo, CA

Test Score Rating

3^{/10}

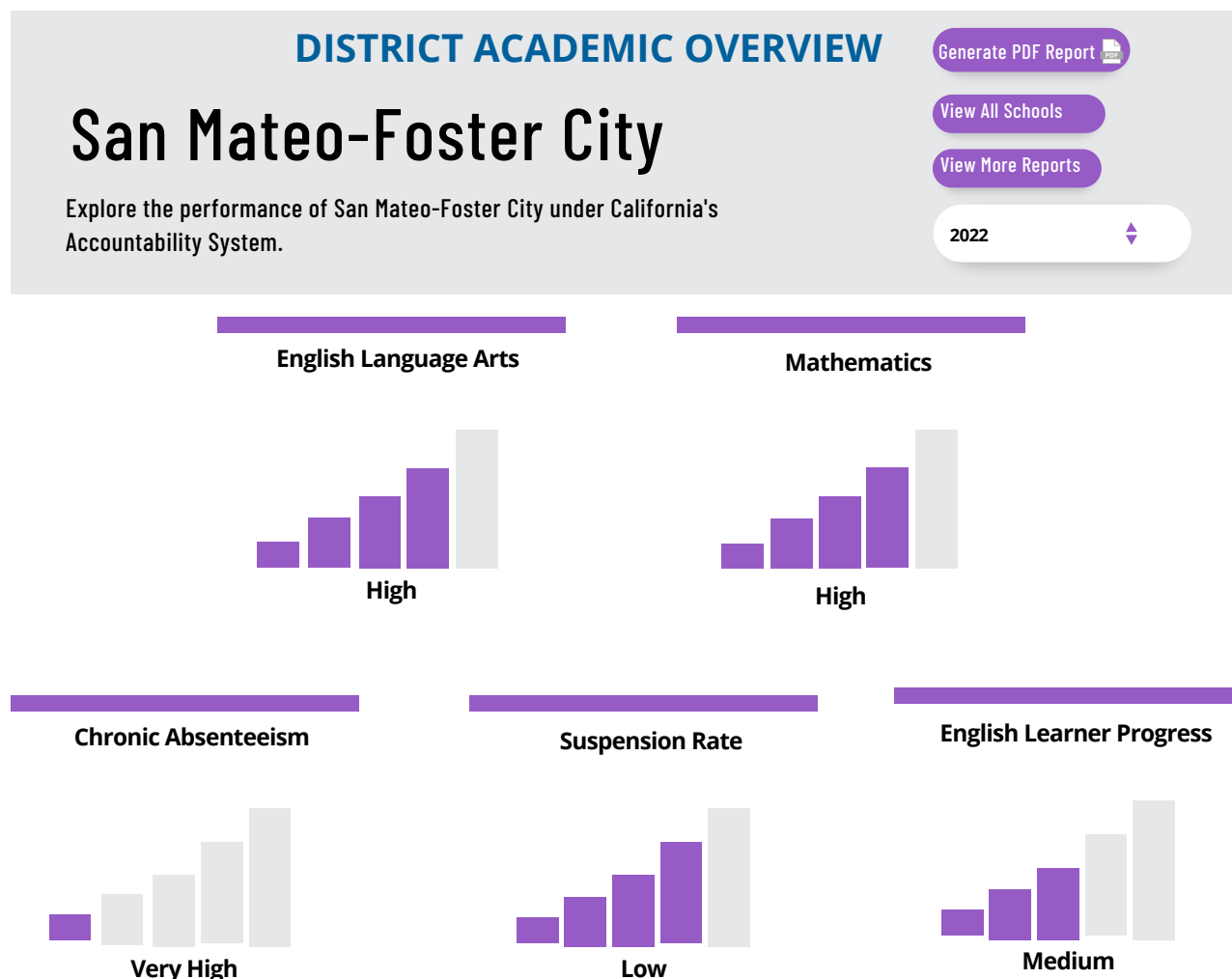
GreatSchools



HOW DOES OUR DISTRICT RANK ON THE 2022 CALIFORNIA DASHBOARD?

The news is very good. Our district, the largest in the county, ranks high in Mathematics and English Language Arts.

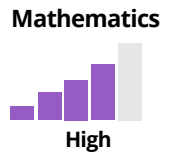
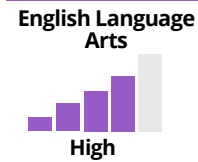
The 2022 California School Dashboard (Dashboard), publicly available today, shows how California's schools fared in 2021-2022. The Dashboard is a key component of California's integrated state and federal accountability system. It provides communities with transparent and meaningful information about the performance of districts, schools, and county offices of education on six state indicators: Graduation Rate, Suspension Rate, English Learner Progress, Academic Performance, and Chronic Absenteeism.



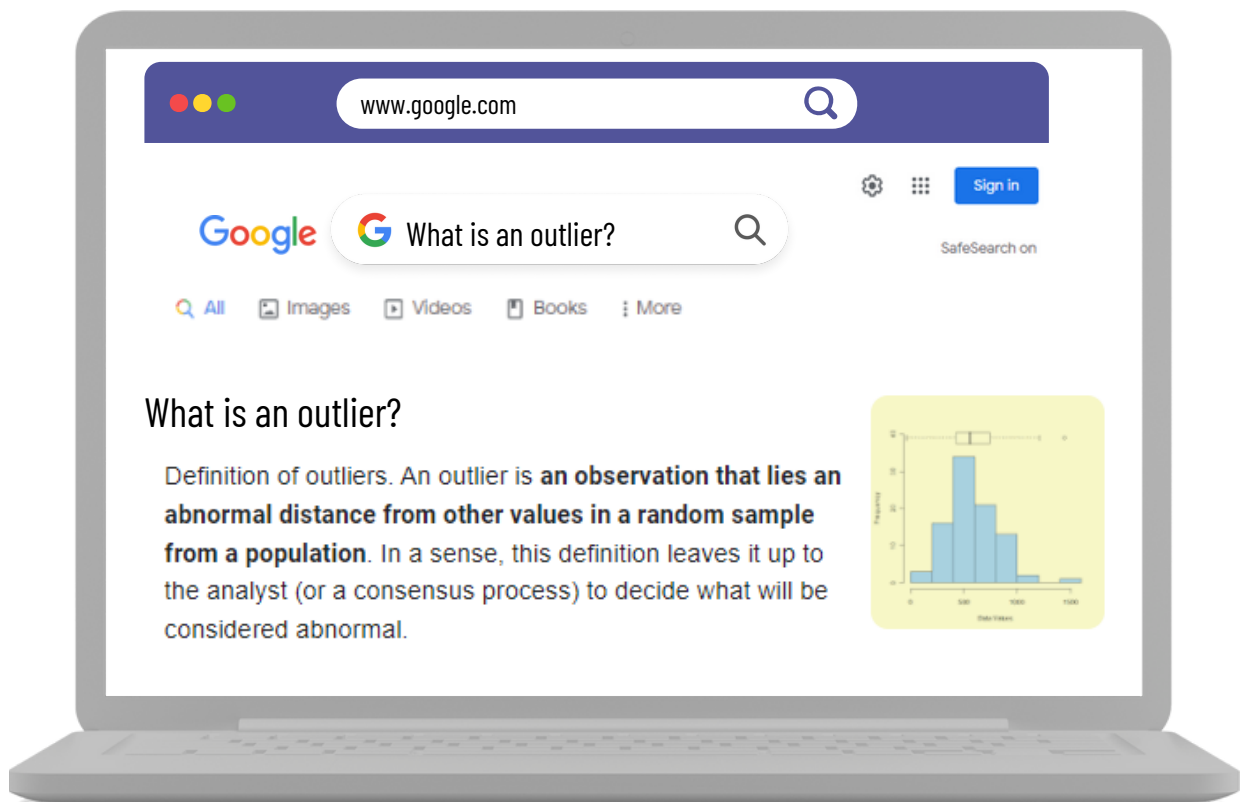
OUR ACADEMIC ACHIEVEMENT DATA DEFIED EXPECTED OUTCOMES

Our school district ranks high in English Language Arts and Mathematics.

As a district, we exceeded expectations based on a variety of factors we analyzed below. When evaluating school district test results, it is important to look for comparison districts in our region and state. Some questions we ask are:



1. How did other large districts (those serving more than 5,000 students) perform?
2. How did districts that serve a similar proportion (between 25-50%) of socioeconomically disadvantaged students (SED) score?
3. How did districts that serve a similar proportion (between 25-50%) of English learners (EL) score?
4. When comparing ourselves to other high-performing districts, how many students do those districts serve?
5. When comparing ourselves to other high-performing districts, how many EL and/or SED students do those districts serve?

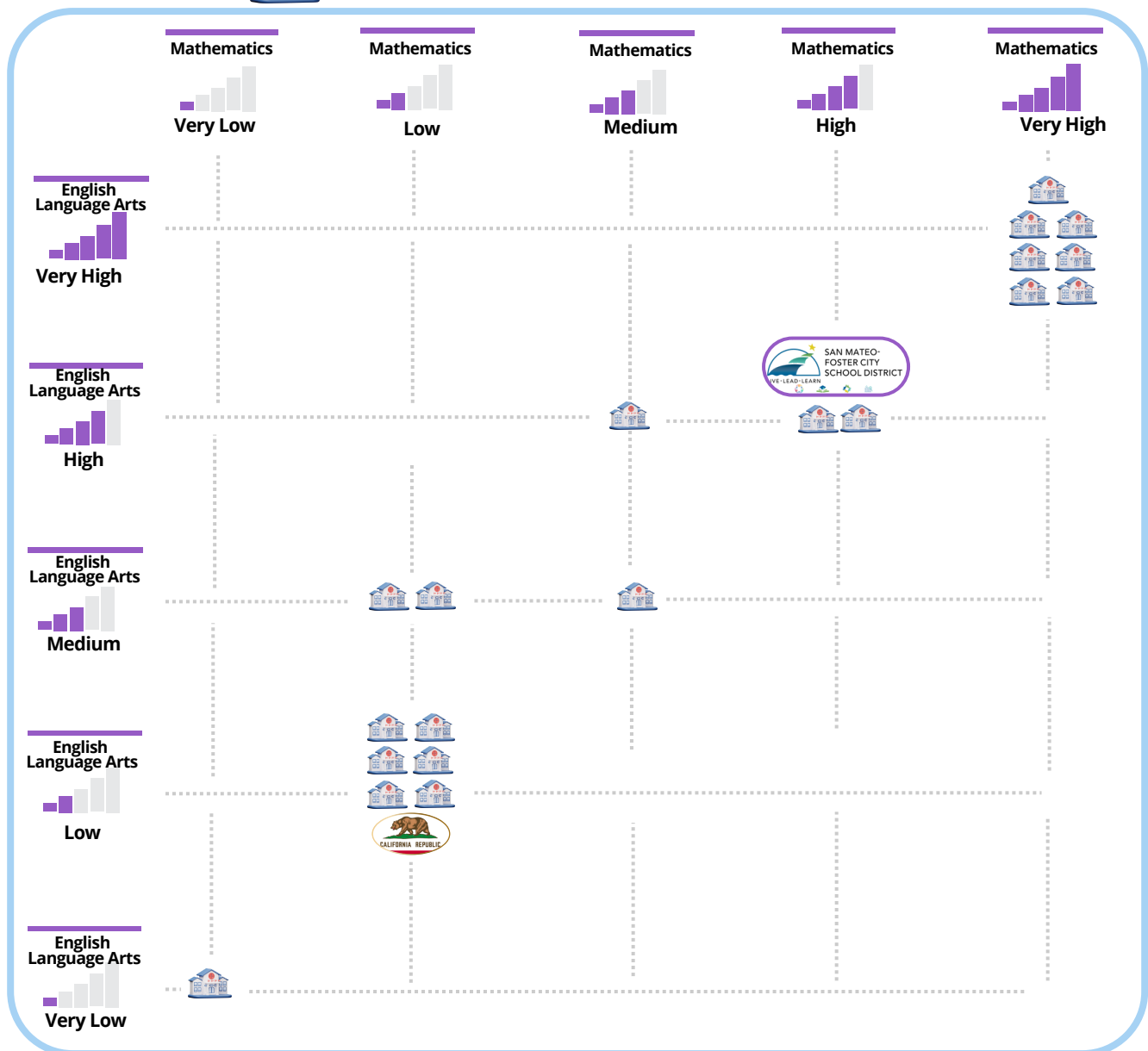


HOW DOES OUR DISTRICT RANK ON THE NEW CALIFORNIA DASHBOARD WITHIN SAN MATEO COUNTY?

The 2022 CA Dashboard rankings allow parents to view and compare achievement across schools and districts. Our county is comprised of 23 school districts serving a range of communities. We encourage parents to check and see how we compare to all other districts. We're very proud that our equity-based strategies have resulted in such positive outcomes. It is particularly wonderful to see such well-rounded academic results. The State of California (as a whole) is rated Low and Low in both English Language Arts and Mathematics.

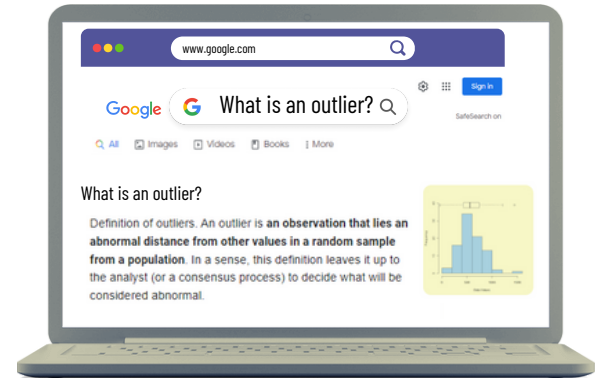


REPRESENTS A SCHOOL DISTRICT IN SAN MATEO COUNTY

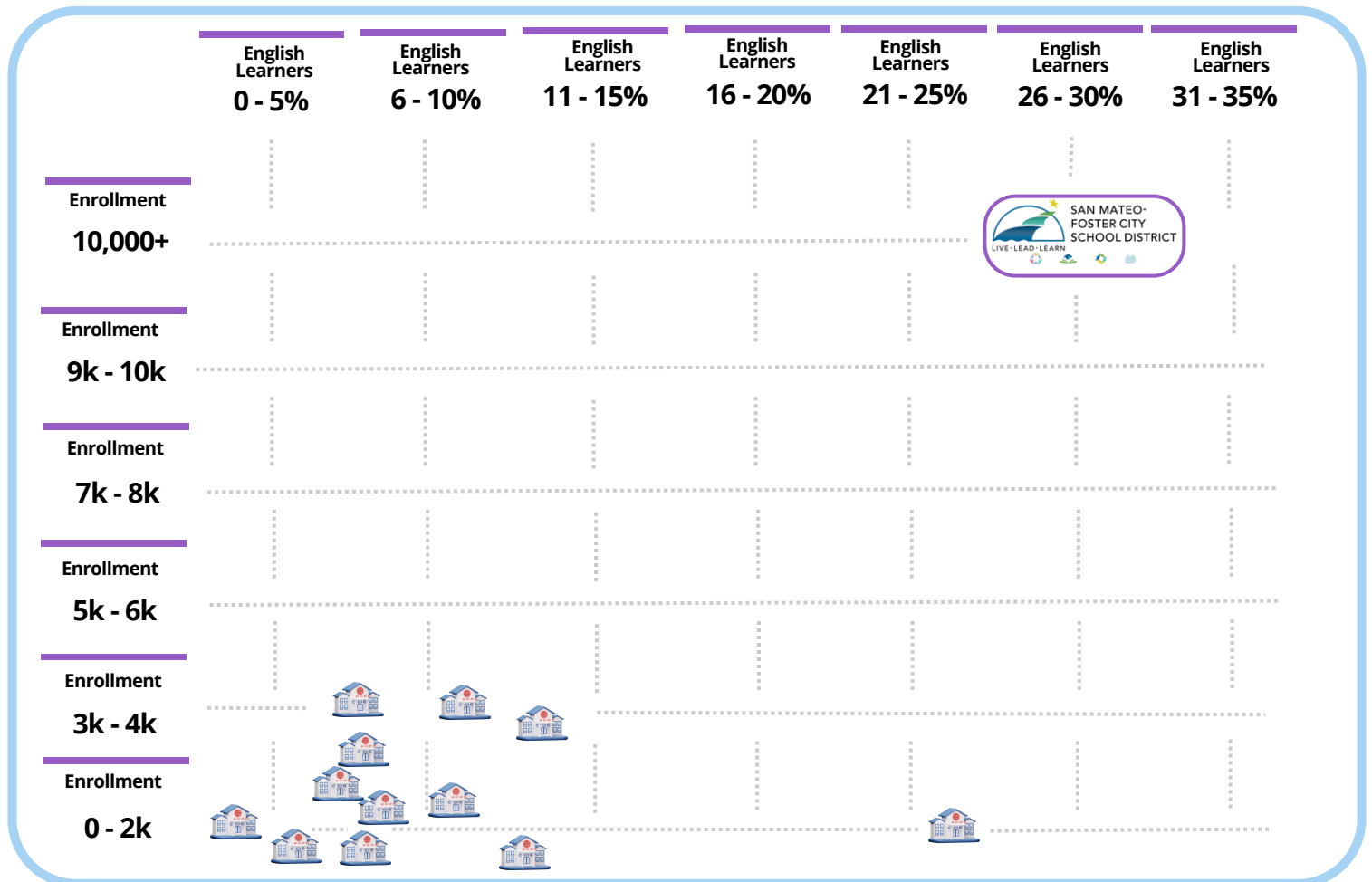


STUDENT ENROLLMENT & ENGLISH LANGUAGE LEARNER RATES WHEN LOOKING AT HIGH OR VERY HIGH ACHIEVING SAN MATEO COUNTY DISTRICTS ON THE CALIFORNIA DASHBOARD

It is important to recognize that our school district is the only high-achieving or very high-achieving district serving more than 30% of English learners. We are also the largest school district scoring in the high-achieving or very high-achieving district in both English Language Arts and Mathematics. Most large school districts serving more than 30% of English learners do not score high in English Language Arts and Mathematics.

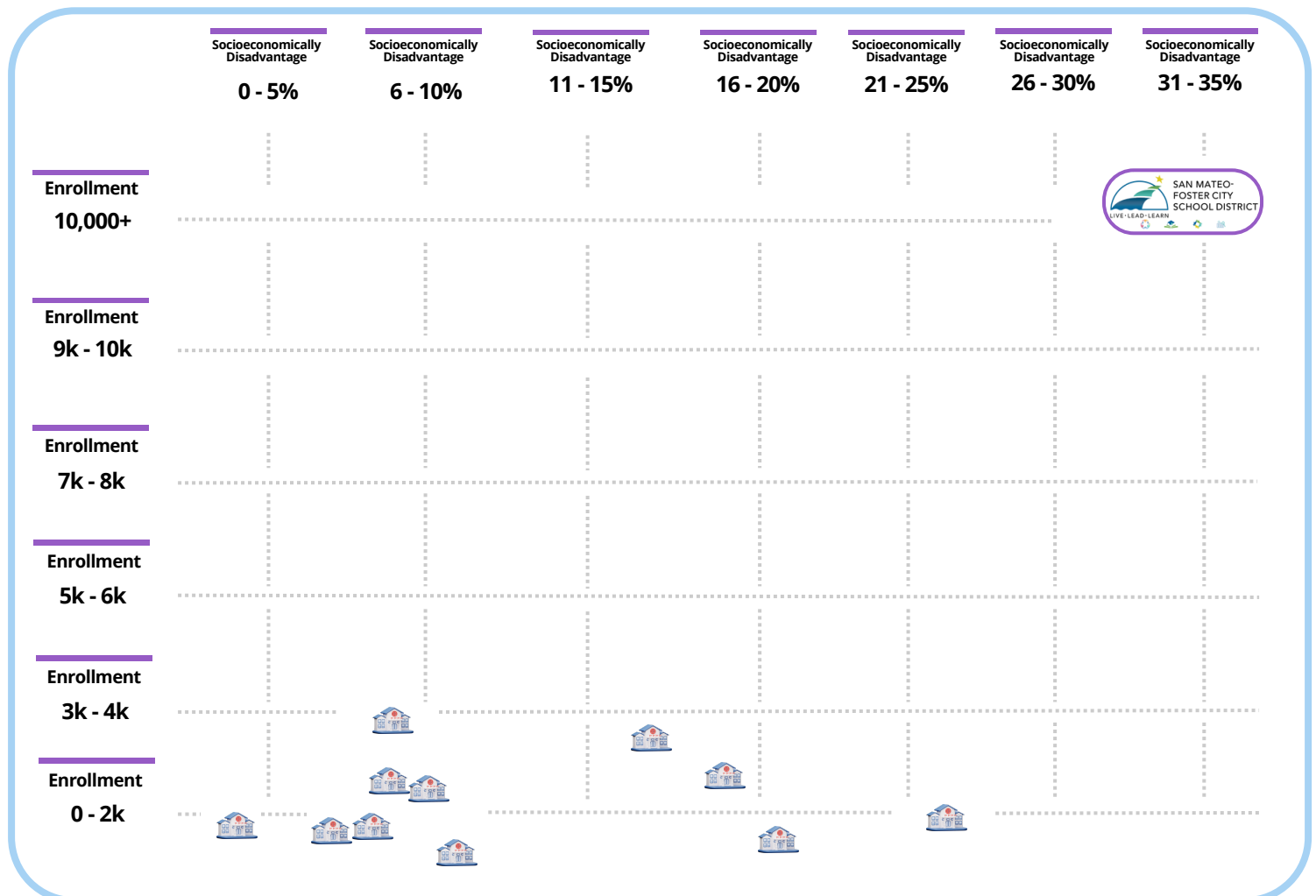
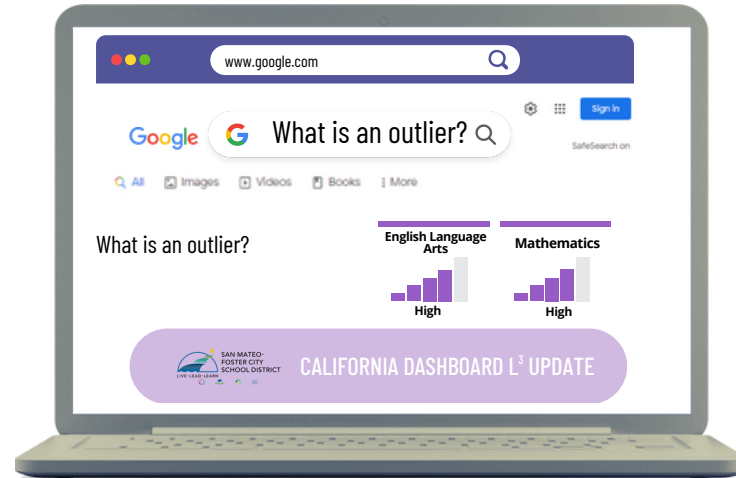


REPRESENTS A SCHOOL DISTRICT IN SAN MATEO COUNTY



STUDENT ENROLLMENT & SOCIOECONOMIC RATES WHEN LOOKING AT HIGH OR VERY HIGH ACHIEVING SAN MATEO COUNTY DISTRICTS ON THE CALIFORNIA DASHBOARD

It is equally important to recognize that our school district is the only high-achieving or very high-achieving district serving more than 30% of Socioeconomically Disadvantaged students. We are also the largest school district, by a substantial amount, scoring in the high-achieving or very high-achieving district in both English Language Arts and Mathematics.

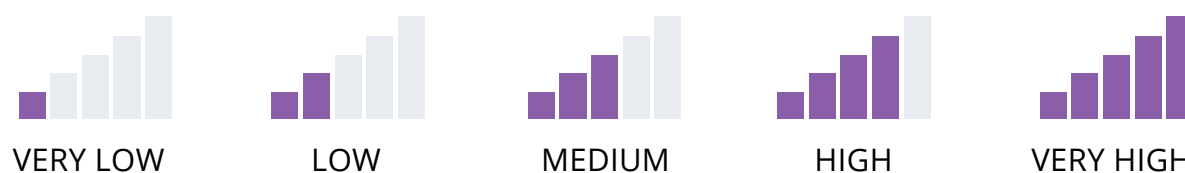


The California School Dashboard (Dashboard) reports how districts and schools are performing on multiple state and local measures that make up California's accountability system. The results are used to identify strengths and weaknesses and help ensure that the needs of all students are met.

In prior years, the Dashboard reported performance levels through the use of colors: blue, green, yellow, orange, and red. Blue represents the highest performance level while red represents the lowest performance level. These performance levels were determined using two years of data utilizing current year performance and the difference from prior year to show growth or decline.



Due to requirements under Assembly Bill 130 (AB 130), the California Department of Education (CDE) can only display the most current year of data (also known as Status) on the 2022 Dashboard. Therefore, compared to prior Dashboards, performance levels will not be reported using colors. Instead, the 2022 Dashboard will report performance levels using one of five Status levels (ranging from Very High, High, Medium, Low, and Very Low) for all state measures* based on the 2021–22 school year data.



Note: The Status levels are reversed for both the Chronic Absenteeism and Suspension Rate Indicators in comparison to other state measures, and the goal is to have a low rate of student absence and suspension.

*State Measures:

- Chronic Absenteeism: kindergarten (K) through grade eight
- Suspension Rate: K through grade twelve
- English Learner Progress: grades one through twelve

- Graduation Rate: high school only
- College/Career: high school only**
- Academic: grades three through eight and grade eleven
 - English language arts/literacy
 - Mathematics

***Note: The College/Career Indicator will not be reported on the 2022 Dashboard.*